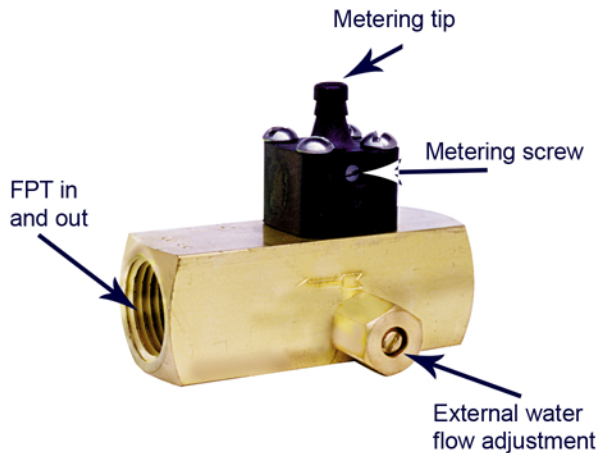


B Series Injector

The B series injector is DEMA'S most adjustable injector. There is an external metering screw for the water flow as well as metering tip or metering screw chemical flow adjustment. Stainless steel construction offered for some sizes and harsher environments.



Benefits:

- Low pressure loss (35% across injector)
 - Example: 100 PSI comes into the injector, 65 PSI will come out of the injector
- Metering knobs for various chemicals
 - Ryton (23-32T 3/8" barb, 24-32T, 1/4" barb)
 - SS (23-32ST 3/8" barb, 24-32ST 1/4" barb)
 - High Grade SS (24-32PS 1/4" barb)

B Series Injectors

| Injector | NPT | Body Material | Metering Knob | | Metering Tip Kit Included | Maximum Induction | Flow | |
|----------|------|---------------|---------------|------------|---------------------------|-------------------|--------------|------------------|
| | | | Material | Type | | | Low @ 10 PSI | High @ 700 PSI** |
| 202B | 3/8" | Brass | Ryton | Screw | No | 8 oz/min | .25 GPM | 11 GPM |
| 202BS | | | SS | Screw/Tips | No | | | |
| 202BT | | | Ryton | Tips | Yes | | | |
| 203B | 3/8" | Brass | Ryton | Screw | No | 16 oz/min | .50 GPM | 20 GPM |
| 203BP | | | SS* | Screw/Tips | No | | | |
| 203BS | | | SS | Screw/Tips | No | | | |
| 203BS.2 | | SS | Screw/Tips | No | | | | |
| 203BST | | Brass | SS | Tips | Yes | | | |
| 203BT | | | Ryton | Tips | Yes | | | |
| 204B | 1/2" | Brass | Ryton | Screw | No | 36 oz/min | 2.0 GPM | 35 GPM |
| 204BP | | | SS* | Screw/Tips | No | | | |
| 204BS | | | SS | Screw/Tips | No | | | |
| 204BS.2 | | SS | Screw/Tips | No | | | | |
| 204BT | | Brass | Ryton | Tips | Yes | | | |
| 206B | 3/4" | Brass | Ryton | Screw | No | 42 oz/min | 3.6 GPM | 60 GPM |
| 206BS | | | SS | Screw/Tips | No | | | |
| 206BSP | | | SS* | Screw/Tips | No | | | |
| 206BST | | | SS | Tips | Yes | | | |
| 206BT | | | Ryton | Tips | Yes | | | |

*700 PSI recommended use of stainless steel metering knob

** High grade SS applies to metering screw for very corrosive chemicals

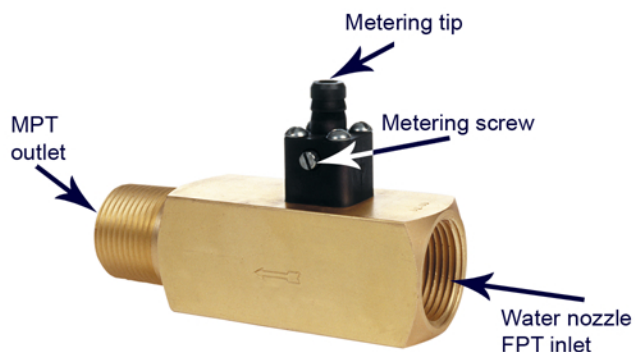


C Series Injector

The C series injector is DEMA'S standard injector. There are many options to use this injector in a variety of ways, as a stand-alone unit with the proper corrosive resistance.

Benefits:

- Low pressure loss (35% across injector)
- EX. 100 PSI comes into the injector, 65 PSI will come out of the injector
- Metering knobs for various chemicals
- Ryton (23-32T 3/8" barb, 24-32T, 1/4" barb)
- SS (23-32ST 3/8" barb, 24-32ST 1/4" barb)
- High Grade SS (24-32PS 1/4" barb)



C Series Injectors

| Injector | NPT | Body Material | Metering Knob | | Metering Tip Kit Included | Maximum Induction | Flow | |
|----------|-------|---------------|---------------|------------|---------------------------|-------------------|--------------|-------------------|
| | | | Material | Type | | | Low @ 15 PSI | High @ 700 PSI*** |
| 200.3C | 1/8" | Brass | Ryton | Screw | No | 3 oz/min | .10 GPM | 1.1 GPM |
| 200.3CP | | | SS* | Screw/Tips | No | | | |
| 200.3CS | | | SS | Screw/Tips | No | | | |
| 200.3CST | | | SS | Tips | Yes | | | |
| 200.3CT | | | Ryton | Tips | Yes | | | |
| 200C | 1/8" | | Ryton | Screw | No | 5 oz/min | .20 GPM | 2.2 GPM |
| 200CS | | | SS | Screw/Tips | No | | | |
| 200CSP | | | SS* | Screw/Tips | No | | | |
| 200CST | | | SS | Tips | Yes | | | |
| 200CT | | | Ryton | Tips | Yes | | | |
| 201C | 1/8" | | Ryton | Screw | No | 7 oz/min | .39 GPM | 4.3 GPM |
| 201CHT | | | Ryton | Tips** | Yes | | | |
| 201CS | | | SS | Screw/Tips | No | | | |
| 201CSP | | | SS* | Screw/Tips | No | | | |
| 201CST | | | SS | Tips | Yes | | | |
| 201CT | Ryton | | Tips | Yes | | | | |
| 202C | 1/4" | | Ryton | Screw | No | 11 oz/min | .79 GPM | 8.9 GPM |
| 202CS | | | SS | Screw/Tips | No | | | |
| 202CSP | | | SS* | Screw/Tips | No | | | |
| 202CT | | | Ryton | Tips | Yes | | | |
| 203C | 3/8" | Ryton | Screw | No | 21 oz/min | 1.6 GPM | 18 GPM | |
| 203CP | | SS* | Screw/Tips | No | | | | |
| 203CT | Ryton | Tips | Yes | | | | | |
| 204C | 1/2" | Ryton | Screw | No | 30 oz/min | 3.2 GPM | 36 GPM | |
| 204CT | | Ryton | Tips | Yes | | | | |
| 206C | 3/4" | Ryton | Screw | No | 55 oz/min | 6.3 GPM | 69 GPM | |
| 206CS | | SS | Screw/Tips | No | | | | |
| 206CT | | Ryton | Tips | Yes | | | | |
| 208C | 1" | Ryton | Screw | No | 60 oz/min | 13 GPM | 99 GPM | |
| 208CS | | SS | Screw/Tips | No | | | | |
| 208CST | | SS | Tips | Yes | | | | |
| 208CT | | Ryton | Tips | Yes | | | | |

* High grade metering screw for corrosive chemicals

**700 PSI flow or greater, SS metering knob recommended